



SUMMIT

HILLWOOD HOMES



5 BEDROOMS | 3.5 BATHROOMS | 3 CAR GARAGE
3,660 TOTAL SQ. FT.

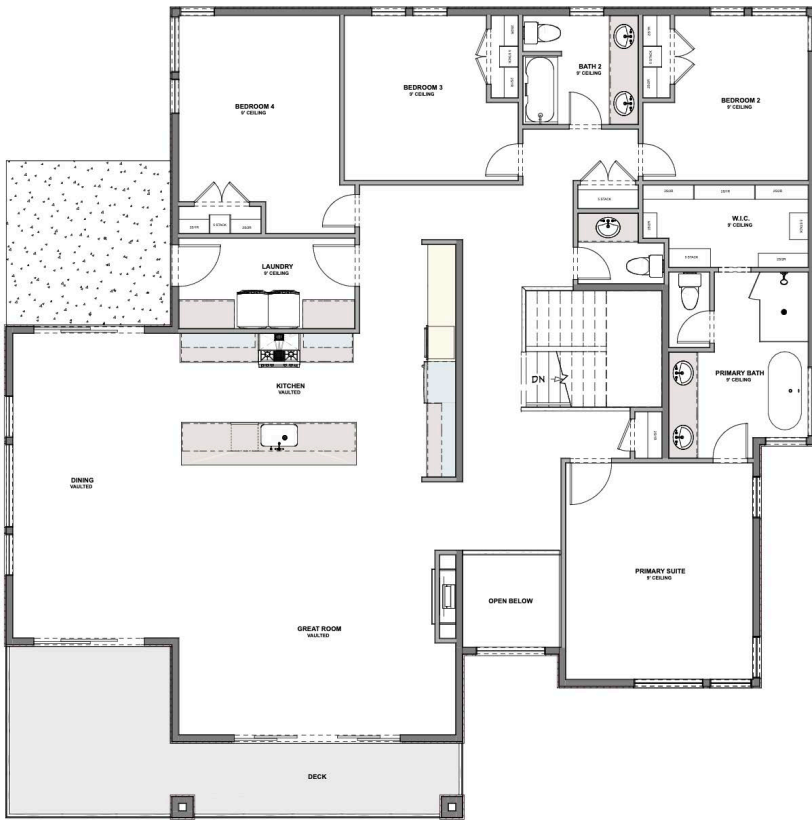
HOME FEATURES

- 10' Ceilings on Lower Floor
- 9' Ceiling on Upper Floor
- Vaulted Great room and Primary Bedroom where available
- Open Kitchen and Living Room
- Kitchen Island
- Master Bedroom Walk-in Closet
- Mud and Laundry Room off Garage
- 8' Recessed panel Doors
- Tile Flooring in Bathroom and Laundry
- Moen Gibson Chrome plumbing fixtures
- Bosch Appliance Package
- Energy Saving Low-E Dual Glazed Black exterior / White interior windows
- Gas Fireplace in Great room
- Quartz Countertops in Kitchen and Bathrooms

Hillwood Homes reserves the right to change floor plans, features, elevations, prices, materials and specification at any time. All square footages and measurements are approximate. Renderings are for marketing purposes only and may not reflect the finished product. Please talk to your sales Agent for more information.

UPPER FLOOR

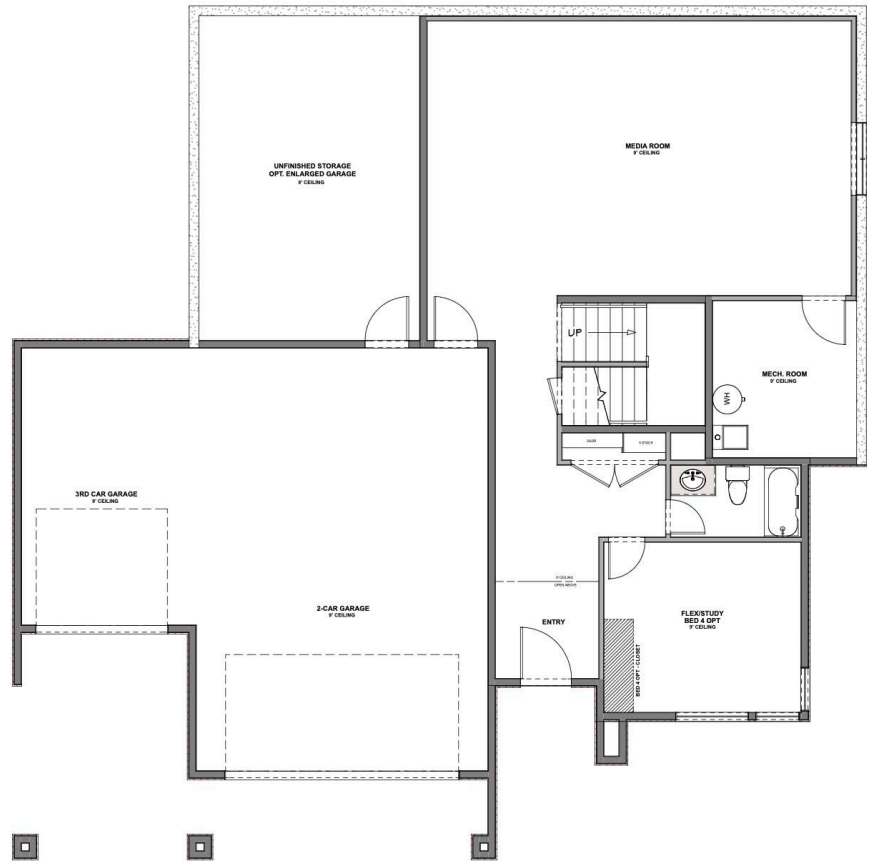
Approx 2,520 Sq. Ft.



HILLWOOD HOMES

LOWER FLOOR

Approx 1,140 Sq. Ft.



Hillwood Homes Sales | 385.275.3133

HillwoodHomes.com