



HILLWOOD  
HOMES

# MAPLE PLAN



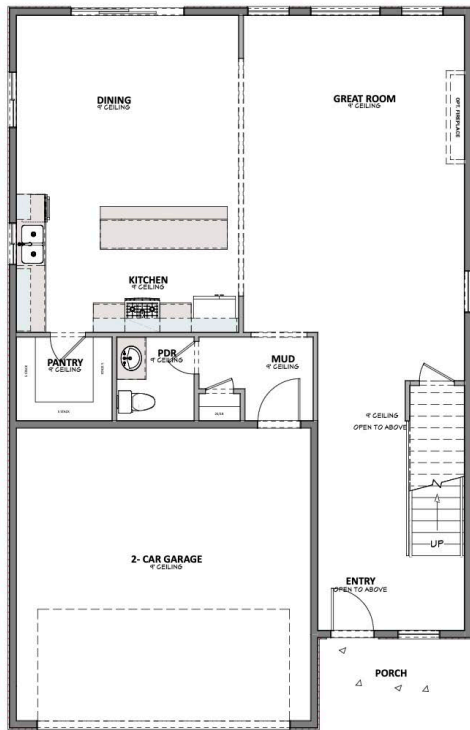
3 - 5 BEDROOMS | 2.5 - 3.5 BATHROOMS |  
2 - 4 CAR GARAGE 2,630 FINISHED SQ. FT. | 3,800 TOTAL SQ. FT.

## HOME FEATURES

- Primary Bedroom on Main Floor
- Open Kitchen and Living Room
- Kitchen Island
- Master Bedroom Walk-in Closet
- Mud and Laundry Room off Garage
- 9' Ceilings on Main Floor and Basement
- 8' Doors on Main Floor
- Quartz Countertops in Kitchen and Bathrooms
- Tile Flooring in Bathroom and Laundry
- Moen Gibson Chrome plumbing fixtures
- Stainless Steel Whirlpool Appliances
- Energy Saving Low-E Dual Glazed White Vinyl Windows
- Full Front Yard Landscaping with Automatic Sprinkler System

## MAIN FLOOR

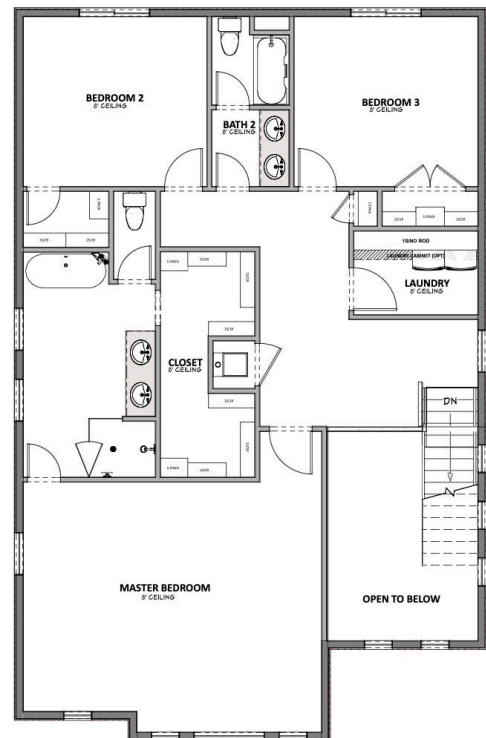
Approx 1,170 Sq. Ft.



HILLWOOD  
HOMES

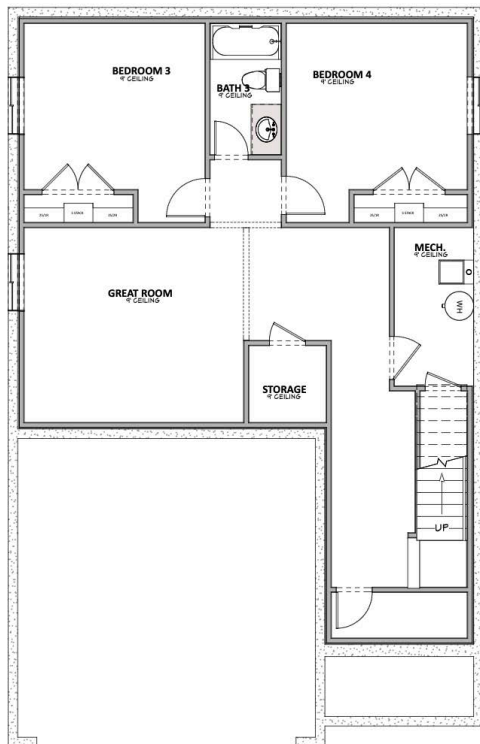
## UPPER FLOOR

Approx 1,460 Sq. Ft.



## OPTIONAL FINISHED BASEMENT

Approx 1,170 Sq. Ft.



Hillwood Homes Sales | 385.275.3133

HillwoodHomes.com