



HILLWOOD  
HOMES

# HAZEL PLAN



4 - 7 BEDROOMS | 2.5 - 3.5 BATHROOMS | 2 - 4 CAR GARAGE  
2,588 FINISHED SQ. FT. | 4,288 TOTAL SQ. FT.

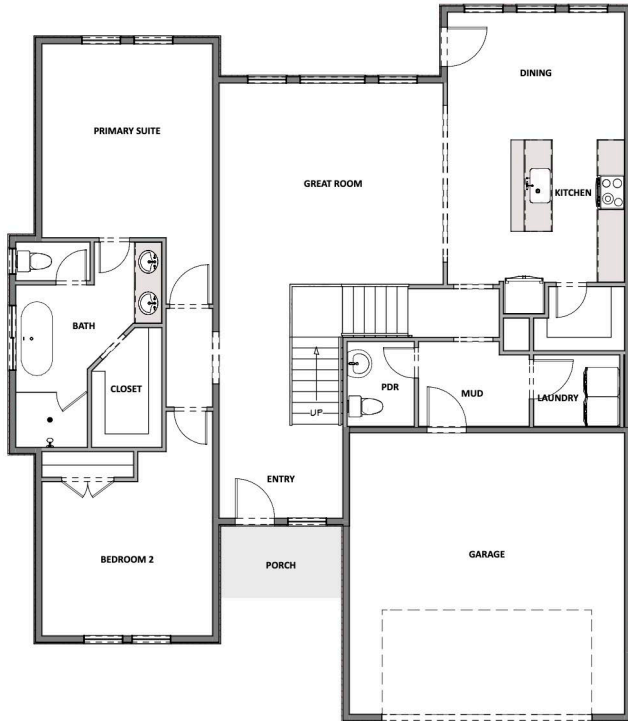
## HOME FEATURES

- Primary Bedroom on Main Floor
- Open Kitchen and Living Room
- Kitchen Island
- Master Bedroom Walk-in Closet
- Mud and Laundry Room off Garage
- 9' Ceilings on Main Floor and Basement
- 8' Doors on Main Floor
- Quartz Countertops in Kitchen and Bathrooms
- Tile Flooring in Bathroom and Laundry
- Moen Gibson Chrome plumbing fixtures
- Stainless Steel Whirlpool Appliances
- Energy Saving Low-E Dual Glazed White Vinyl Windows
- Full Front Yard Landscaping with Automatic Sprinkler System

Hillwood Homes reserves the right to change floor plans, features, elevations, prices, materials and specification at any time. All square footages and measurements are approximate. Renderings are for marketing purposes only and may not reflect the finished product. Please talk to your sales Agent for more information.

## MAIN FLOOR

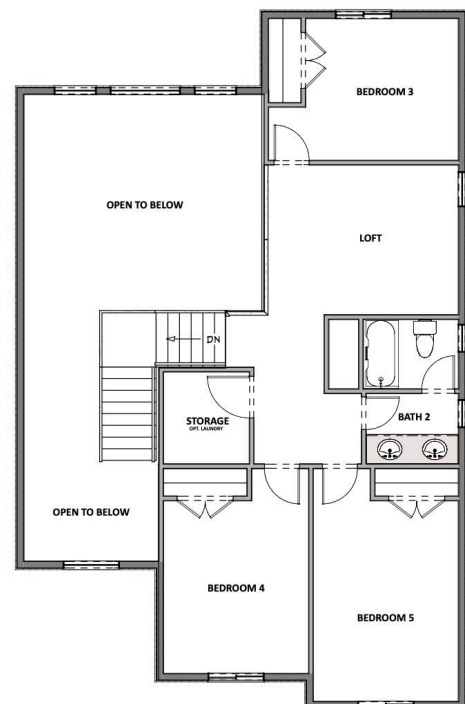
Approx 1,700 Sq. Ft.



HILLWOOD  
HOMES

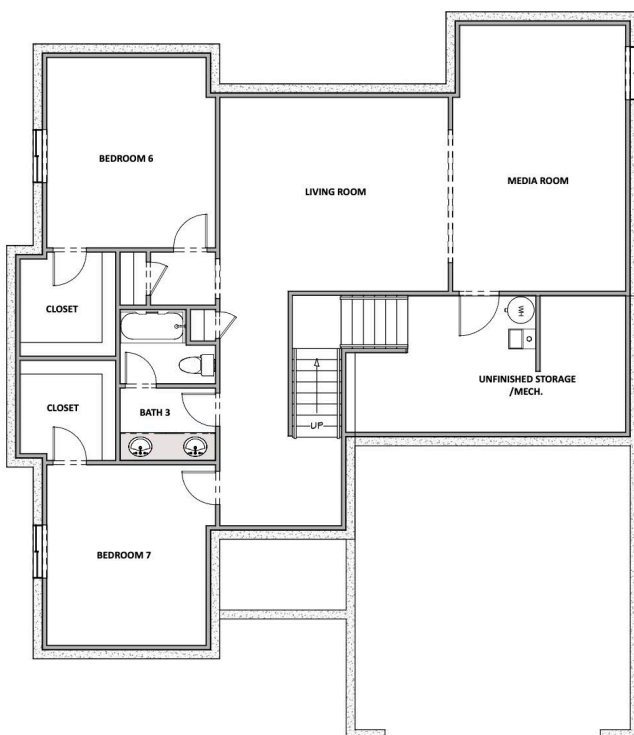
## UPPER FLOOR

Approx 888 Sq. Ft.



## OPTIONAL FINISHED BASEMENT

Approx 1,700 Sq. Ft.



Hillwood Homes Sales | 385.275.3133

HillwoodHomes.com