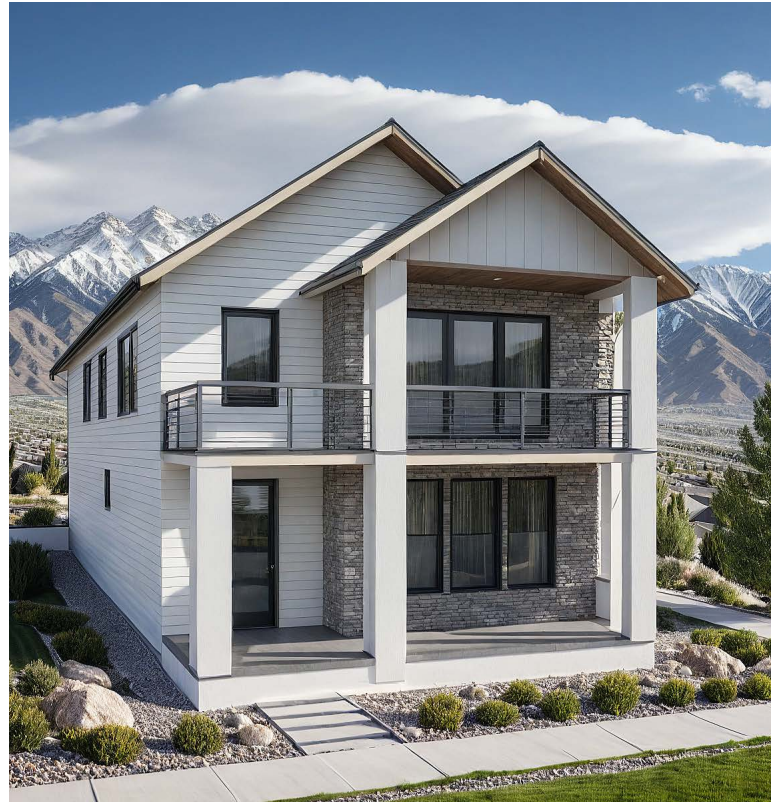




# DOUGLAS VILLA PLAN

HILLWOOD  
HOMES



3 - 4 BEDROOMS | 2.5 - 3.5 BATHROOMS | 2 - 4 CAR GARAGE  
2,148 FINISHED SQ. FT. | 2,946 TOTAL SQ. FT.

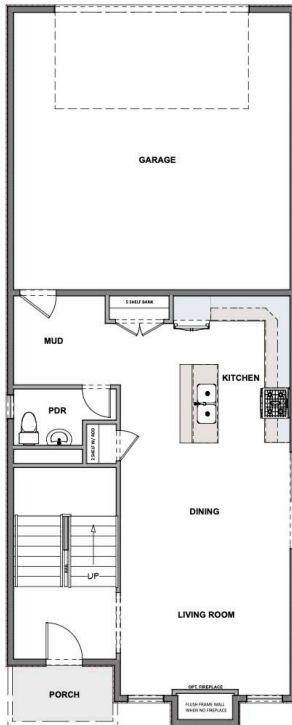
## HOME FEATURES

- Open Kitchen and Living Room
- Kitchen Island
- Master Bedroom Walk-in Closet
- Mud and Laundry Room off Garage
- 9' Ceilings on Main Floor and Basement
- 8' Doors on Main Floor
- Quartz Countertops in Kitchen and Bathrooms
- Tile Flooring in Bathroom and Laundry
- Moen Gibson Chrome plumbing fixtures
- Stainless Steel Whirlpool Appliances
- Energy Saving Low-E Dual Glazed White Vinyl Windows
- Full Front Yard Landscaping with Automatic Sprinkler System

Hillwood Homes reserves the right to change floor plans, features, elevations, prices, materials and specification at any time. All square footages and measurements are approximate. Renderings are for marketing purposes only and may not reflect the finished product. Please talk to your sales Agent for more information.

## MAIN FLOOR

Approx 798 Sq. Ft.



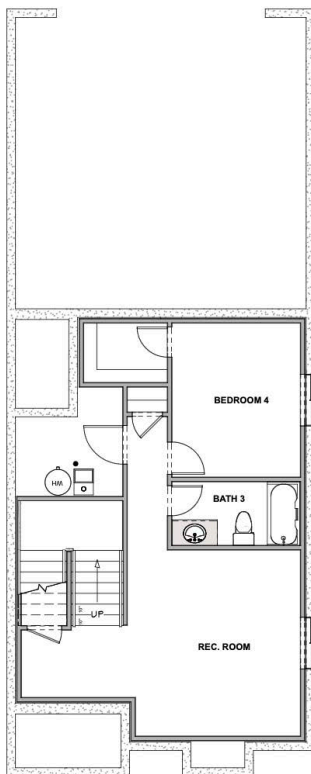
OPT. ENLARGED PORCH



OPT. ENLARGED DECK

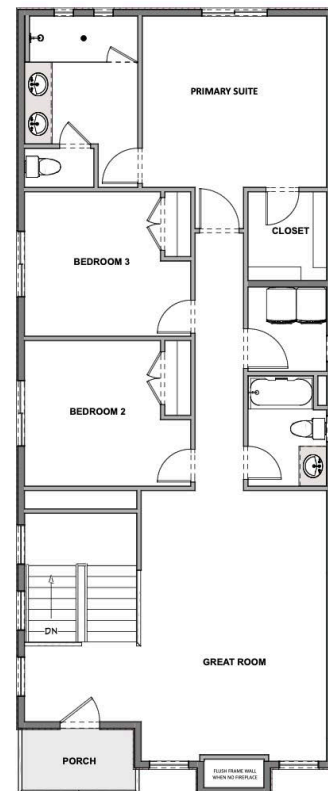
## OPTIONAL FINISHED BASEMENT

Approx 798 Sq. Ft.



## UPPER FLOOR

Approx 1,350 Sq. Ft.



Hillwood Homes Sales | 385.275.3133

HillwoodHomes.com