



HILLWOOD
HOMES

SKYE MEADOWS

MEADOW PLAN



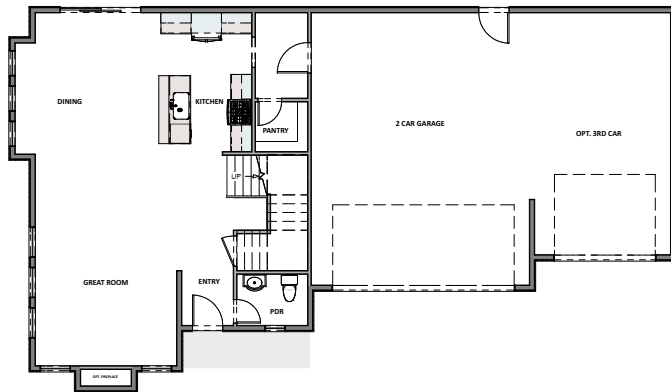
3 - 5 BEDROOMS | 2.5 - 4.5 BATHROOMS | 3 CAR GARAGE
2,347 FINISHED SQ. FT. | 3,334 TOTAL SQ. FT.

HOME FEATURES

- Open Kitchen and Living Room
- Kitchen Island
- Master Bedroom Walk-in Closet
- Mud and Laundry Room off Garage
- 9' Ceilings on Main Floor and Basement
- 8' Doors on Main Floor
- Quartz Countertops in Kitchen and Bathrooms
- Tile Flooring in Bathroom and Laundry
- Moen Gibson Chrome plumbing fixtures
- Stainless Steel Whirlpool Appliances
- Energy Saving Low-E Dual Glazed White Vinyl Windows
- Full Front Yard Landscaping with Automatic Sprinkler System

MAIN FLOOR

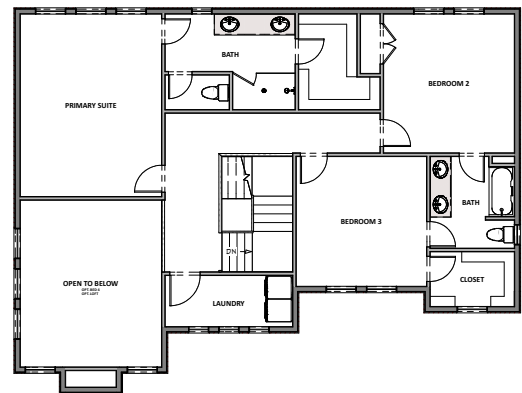
Approx 987 Sq. Ft.



HILLWOOD
HOMES

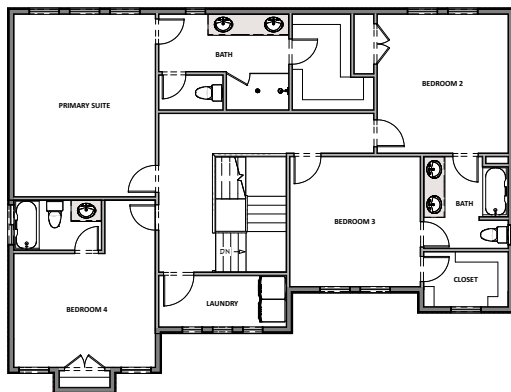
UPPER FLOOR

Approx 1,360 Sq. Ft.



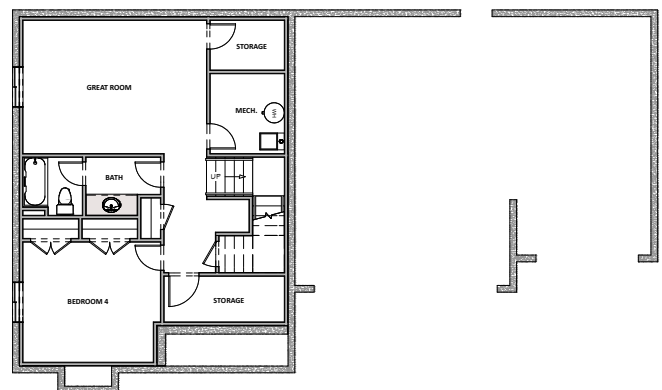
UPPER FLOOR W/4TH BED OPTION

Additional 255 Sq. Ft.



OPTIONAL FINISHED BASEMENT

Approx 987 Sq. Ft.



Hillwood Homes Sales | 801.917.2837

HillwoodHomes.com