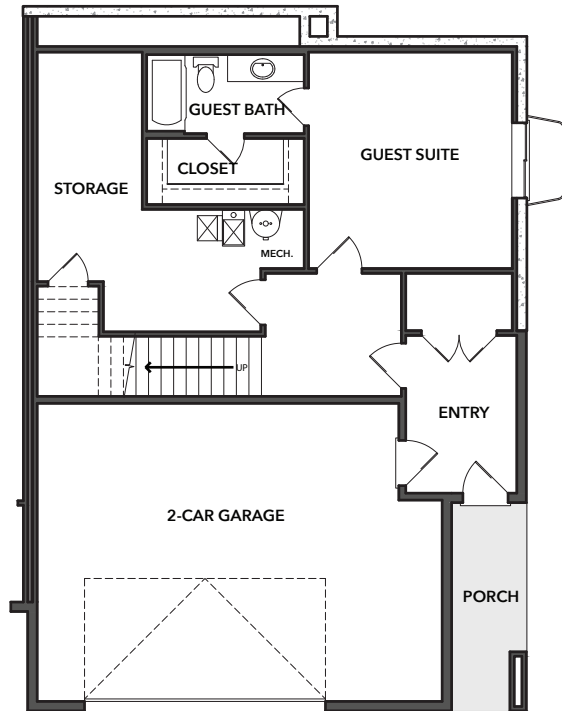
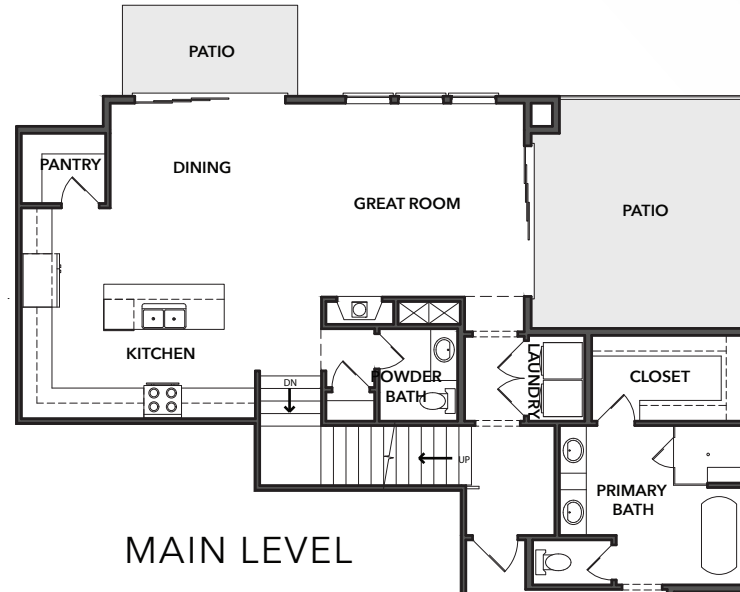


THE DAYLILY

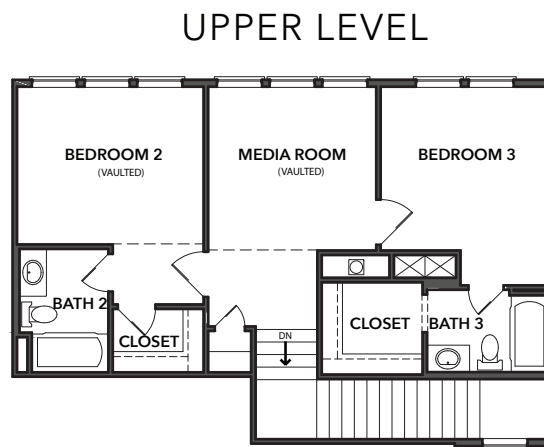
2,862 Sq. Ft. | 4 Bed | 4.5 Bath
Media Room | 2 Patios | 2-Car Garage + Storage



GROUND LEVEL



MAIN LEVEL



UPPER LEVEL



BUILT BY HILLWOOD HOMES

Images provided are solely for illustrative purposes and may not accurately represent the final construction of the home. Floor plans, property features, and finishes may vary based upon plans and specifications and are not guaranteed. Layout and finishes for completed construction may vary from those contained in the renderings and plans. The specific features, floor plans, square footage, dimensions and design elements in the home are subject to change or substitution at the discretion of the Seller until such time as a final purchase contract is entered into between a buyer and seller.