

H

HILLWOOD
HOMES

ORCHARD PLAN



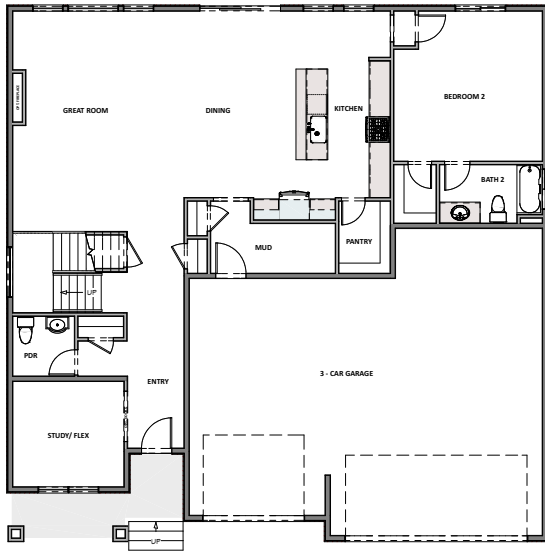
4 - 7 BEDROOMS | 3.5 - 5.5 BATHROOMS | 3 - 4 CAR GARAGE
3,166 FINISHED SQ. FT. | 4,898 TOTAL SQ. FT.

HOME FEATURES

- Open Kitchen and Living Room
- Kitchen Island
- Master Bedroom Walk-in Closet
- Mud and Laundry Room off Garage
- 9' Ceilings on Main Floor and Basement
- 8' Doors on Main Floor
- Quartz Countertops in Kitchen and Bathrooms
- Tile Flooring in Bathroom and Laundry
- Moen Gibson Chrome plumbing fixtures
- Stainless Steel Whirlpool Appliances
- Energy Saving Low-E Dual Glazed White Vinyl Windows
- Full Front Yard Landscaping with Automatic Sprinkler System

MAIN FLOOR

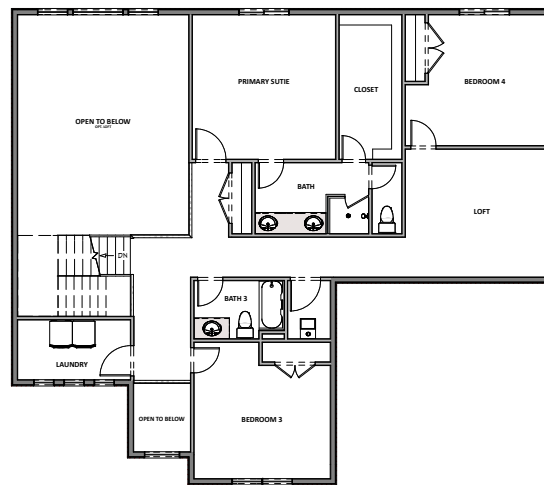
Approx 1,732 Sq. Ft.



HILLWOOD HOMES

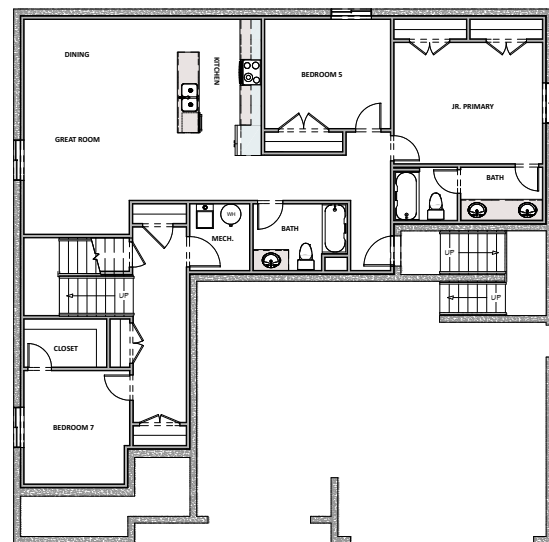
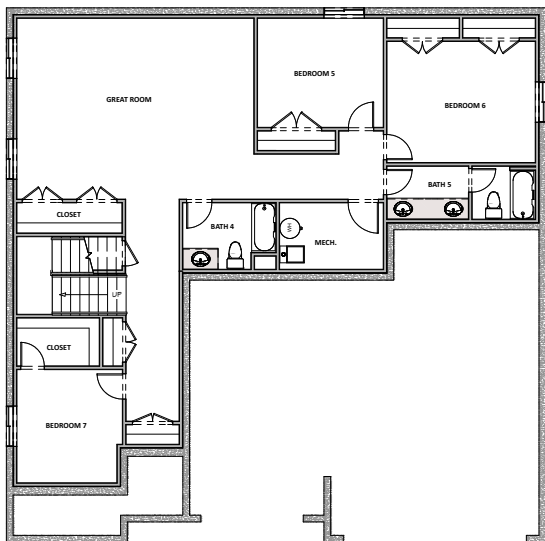
UPPER FLOOR

Approx 1,434 Sq. Ft.



OPTIONAL FINISHED BASEMENT

Approx 1,732 Sq. Ft.



ADU BASEMENT LAYOUT

Hillwood Homes Sales | 385.275.3133

HillwoodHomes.com