



HILLWOOD
HOMES

HIDDEN COVE

HICKORY PLAN



4- 7 BEDROOMS | 3.5- 5.5 BATHROOMS | 2 CAR GARAGE
3,375 FINISHED SQ. FT. | 4,681 TOTAL SQ. FT.

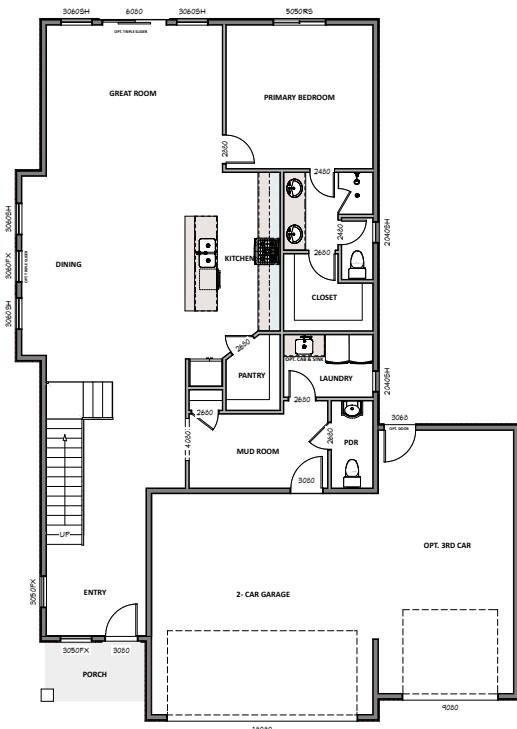
HOME FEATURES

- 9' Ceilings on Main Floor and Basement
- 8' Doors on Main Floor
- 42" Stain Grade Upper Cabinets in Kitchen
- Quartz Countertops in Kitchen and Bathrooms
- Laminate Wood Flooring at Entry and Kitchen, Mud Room, Powder
- Tile Flooring in Bathroom and Laundry
- Moen Gibson Chrome Plumbing Fixtures
- 95% Efficient Natural Gas Furnace
- Wholly-Smooth Finished Sheetrock Walls and Ceilings
- Tile Primary Shower Surround
- Large Energy Saving Low-E, Dual Glazed White Vinyl Windows
- 2x6 Exterior Framed Walls

Hillwood Homes reserves the right to change floor plans, features, elevations, prices, materials and specification with notice at any time.
All square footages and measurements are approximate. Please talk to your sales Agent for more information.

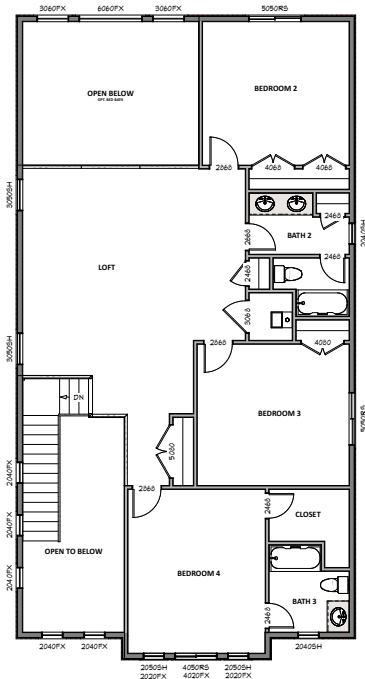
MAIN FLOOR

Approx 1,624 Sq. Ft.



UPPER FLOOR

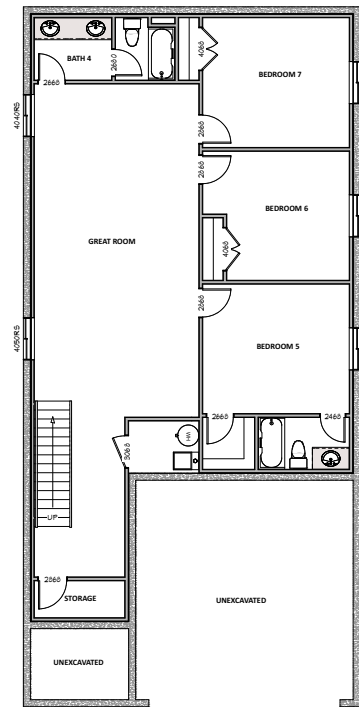
Approx 1,433 Sq. Ft.



HILLWOOD
HOMES

OPT. FINISHED BASEMENT

Approx 1,624 Sq. Ft.



Hillwood Homes Sales | 801.917.2837

HillwoodHomes.com