

# H

HILLWOOD  
HOMES

## GRASSLAND PLAN



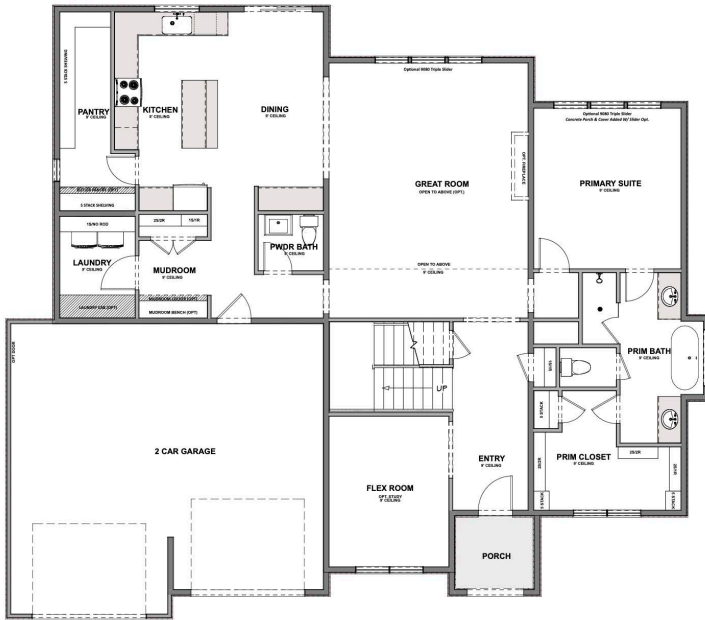
2 - 6 BEDROOMS | 1.5 - 3.5 BATHROOMS | 2 - 4 CAR GARAGE  
1,997 FINISHED SQ. FT. | 3,994 TOTAL SQ. FT.

### HOME FEATURES

- Primary Bedroom on Main Floor
- Open Kitchen and Living Room
- Kitchen Island
- Master Bedroom Walk-in Closet
- Mud and Laundry Room off Garage
- 9' Ceilings on Main Floor and Basement
- 8' Doors on Main Floor
- Quartz Countertops in Kitchen and Bathrooms
- Tile Flooring in Bathroom and Laundry
- Moen Gibson Chrome plumbing fixtures
- Stainless Steel Whirlpool Appliances
- Energy Saving Low-E Dual Glazed White Vinyl Windows
- Full Front Yard Landscaping with Automatic Sprinkler System

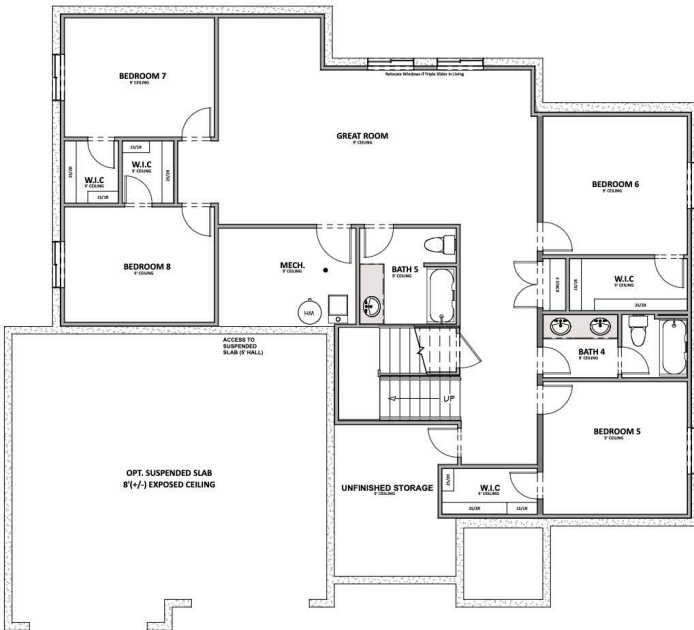
Hillwood Homes reserves the right to change floor plans, features, elevations, prices, materials and specification at any time. All square footages and measurements are approximate. Renderings are for marketing purposes only and may not reflect the finished product. Please talk to your sales Agent for more information.

**MAIN FLOOR**  
Approx 1,997 SQ. FT.



**HILLWOOD  
HOMES**

**OPTIONAL FINISHED BASEMENT**  
Approx 1,997 SQ. FT.



ADU BASEMENT LAYOUT

**Hillwood Homes Sales | 385.275.3133**

HillwoodHomes.com