



HILLWOOD
HOMES

Bonner Meadows

ZURICH PLAN



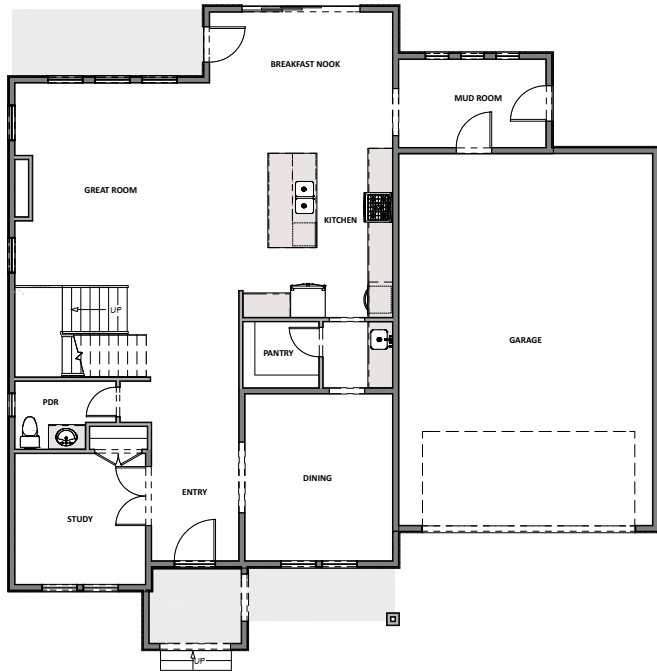
4 - 6 BEDROOMS | 3.5 - 4.5 BATHROOMS | 2 CAR GARAGE
3,632 FINISHED SQ. FT. | 5,237 TOTAL SQ. FT.

HOME FEATURES

- 9' Ceilings on Main Floor and Basement
- 8' Doors on Main Floor
- 42" Stain Grade Upper Cabinets in Kitchen
- Quartz Countertops in Kitchen and Bathrooms
- Laminate Wood Flooring at Entry and Kitchen, Mud Room, Powder
- Tile Flooring in Bathroom and Laundry
- Moen Gibson Chrome Plumbing Fixtures
- 95% Efficient Natural Gas Furnace
- Wholly-Smooth Finished Sheetrock Walls and Ceilings
- Tile Primary Shower Surround
- Large Energy Saving Low-E, Dual Glazed White Vinyl Windows
- 2x6 Exterior Framed Walls

MAIN FLOOR

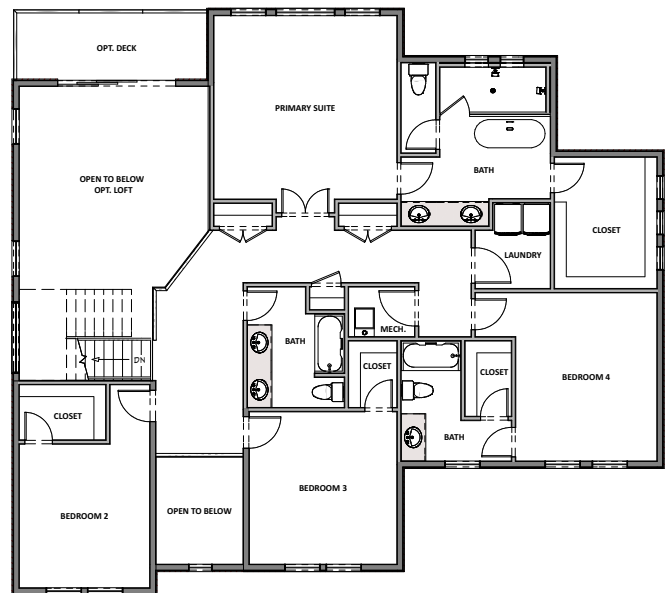
Approx 1,602 Sq. Ft.



HILLWOOD HOMES

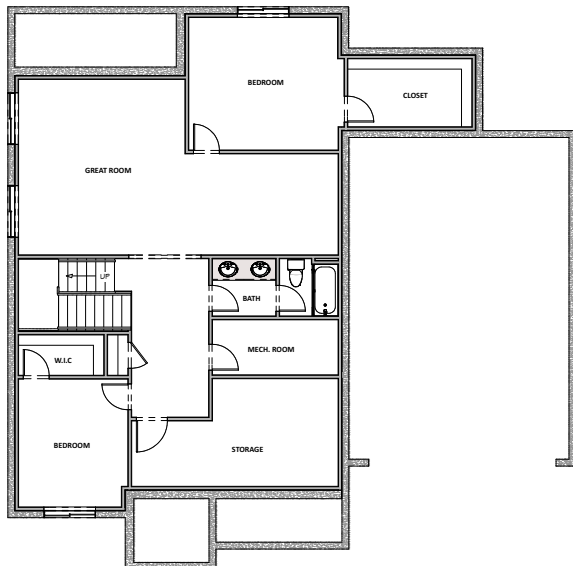
UPPER FLOOR

Approx 2,030 Sq. Ft.



OPTIONAL FINISHED BASEMENT

Approx 1,602 Sq. Ft.



Hillwood Homes Sales | 801.917.2837

HillwoodHomes.com