



HILLWOOD
HOMES

Bonner Meadows

RHINE PLAN



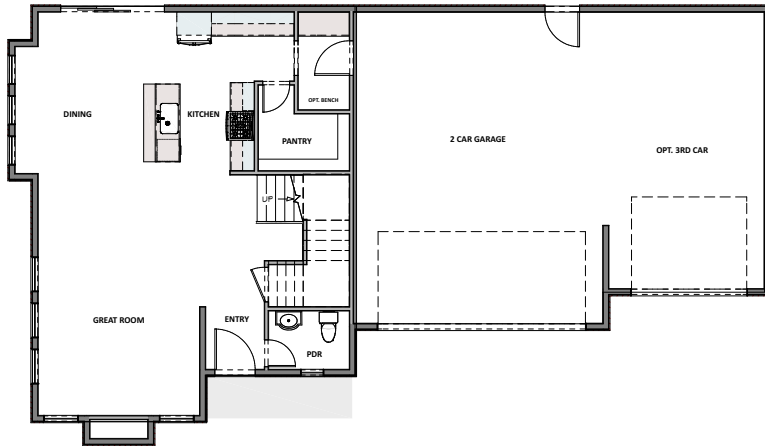
3 - 5 BEDROOMS | 2.5 - 5.5 BATHROOMS | 2 CAR GARAGE
2,347 FINISHED SQ. FT. | 3,334 TOTAL SQ. FT.

HOME FEATURES

- 9' Ceilings on Main Floor and Basement
- 8' Doors on Main Floor
- 42" Stain Grade Upper Cabinets in Kitchen
- Quartz Countertops in Kitchen and Bathrooms
- Laminate Wood Flooring at Entry and Kitchen, Mud Room, Powder
- Tile Flooring in Bathroom and Laundry
- Moen Gibson Chrome Plumbing Fixtures
- 95% Efficient Natural Gas Furnace
- Wholly-Smooth Finished Sheetrock Walls and Ceilings
- Tile Primary Shower Surround
- Large Energy Saving Low-E, Dual Glazed White Vinyl Windows
- 2x6 Exterior Framed Walls

MAIN FLOOR

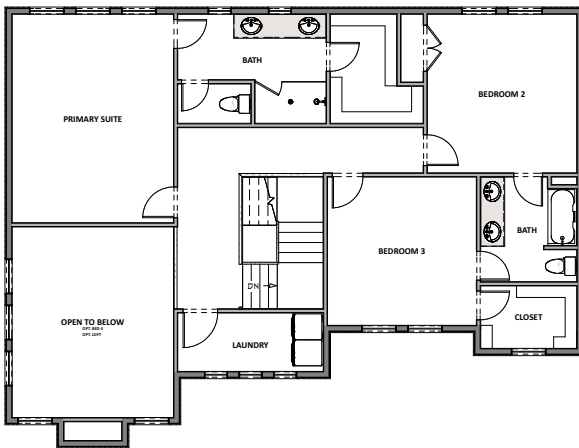
Approx 987 Sq. Ft.



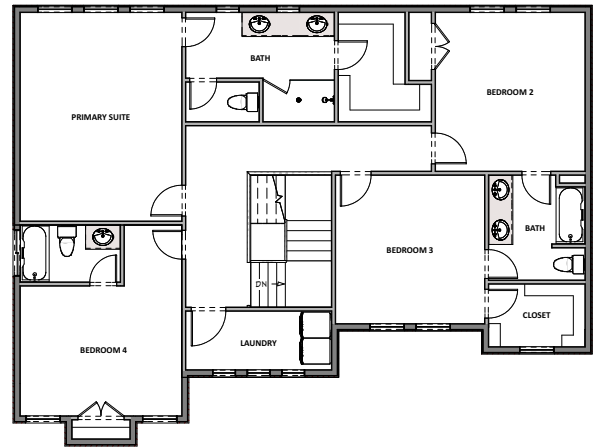
HILLWOOD HOMES

UPPER FLOOR

Approx 1,360 Sq. Ft.

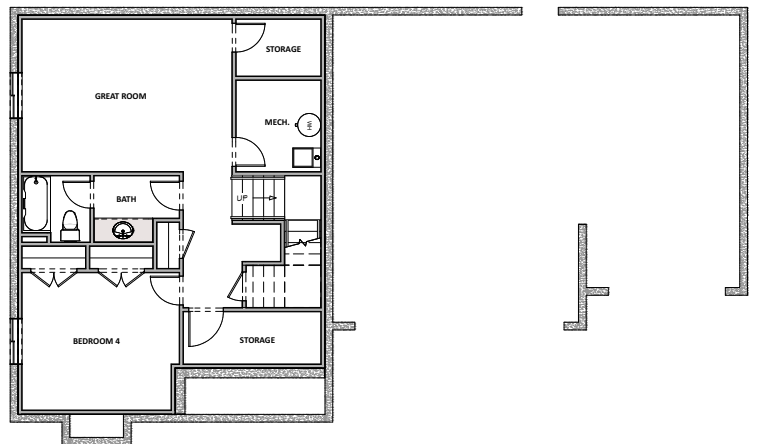


OPTIONAL 4TH BED/BATH



OPTIONAL FINISHED BASEMENT

Approx 987 Sq. Ft.



Hillwood Homes Sales | 801.917.2837

HillwoodHomes.com