



HILLWOOD
HOMES

BEECHWOOD VILLA PLAN



3 - 5 BEDROOMS | 2.5 - 4.5 BATHROOMS | 2 - 3 CAR
GARAGE 2,330 FINISHED SQ. FT. | 3,568 TOTAL SQ. FT.

HOME FEATURES

- Primary Bedroom on Main Floor
- Open Kitchen and Living Room
- Kitchen Island
- Master Bedroom Walk-in Closet
- Mud and Laundry Room off Garage
- 9' Ceilings on Main Floor and Basement
- 8' Doors on Main Floor
- Quartz Countertops in Kitchen and Bathrooms
- Tile Flooring in Bathroom and Laundry
- Moen Gibson Chrome plumbing fixtures
- Stainless Steel Whirlpool Appliances
- Energy Saving Low-E Dual Glazed White Vinyl Windows
- Full Front Yard Landscaping with Automatic Sprinkler System

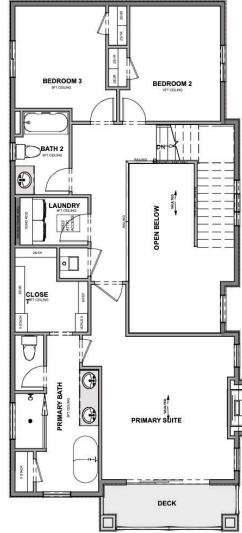
MAIN FLOOR

Approx 1,238 Sq. Ft.



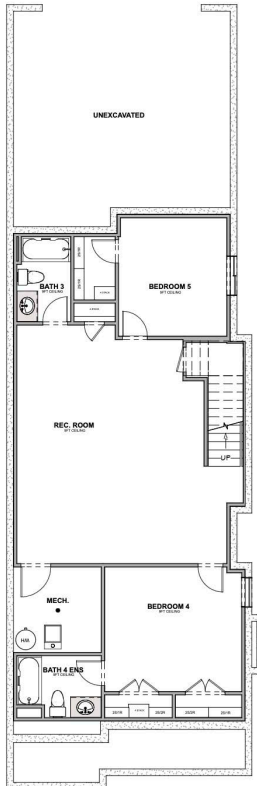
UPPER FLOOR

Approx 1,092 Sq. Ft.



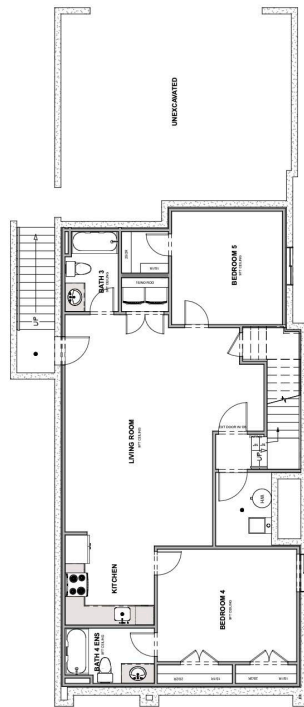
OPTIONAL FINISHED BASEMENT

Approx 1,238 Sq. Ft.



OPTIONAL FINISHED ADU BASEMENT

Approx 1,238 Sq. Ft.



HILLWOOD
HOMES

Hillwood Homes Sales | 385.275.3133

HillwoodHomes.com