



BEECHWOOD VILLA PLAN

HILLWOOD
HOMES



3 - 5 BEDROOMS | 2.5 - 4.5 BATHROOMS | 2 - 3 CAR
GARAGE 2,287 FINISHED SQ. FT. | 3,545 TOTAL SQ. FT.

HOME FEATURES

- Open Kitchen and Living Room
- Kitchen Island
- Master Bedroom Walk-in Closet
- Mud Room off Garage
- 9' Ceilings on 2nd Floor and Basement
- 10' Ceilings on main Floor
- 8' Doors on Main Floor
- Quartz Countertops in Kitchen and Bathrooms
- Tile Flooring in Bathroom and Laundry
- Moen Gibson Chrome plumbing fixtures
- Stainless Steel Whirlpool Appliances
- Energy Saving Low-E Dual Glazed White Vinyl Windows
- Full Front Yard Landscaping with Automatic Sprinkler System

Hillwood Homes reserves the right to change floor plans, features, elevations, prices, materials and specification at any time. All square footages and measurements are approximate. Renderings are for marketing purposes only and may not reflect the finished product. Please talk to your sales Agent for more information.

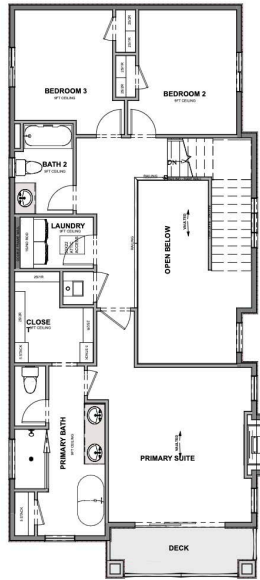
MAIN FLOOR

Approx 1,258 Sq. Ft.



UPPER FLOOR

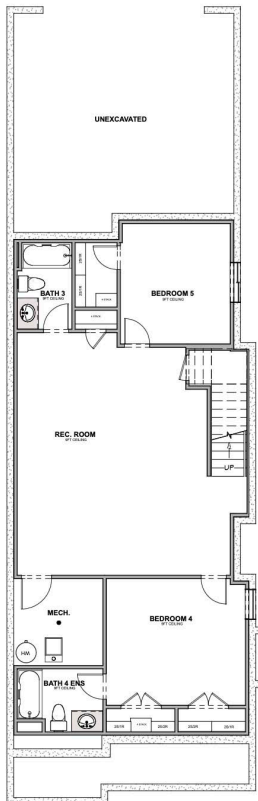
Approx 1,029 Sq. Ft.



HILLWOOD HOMES

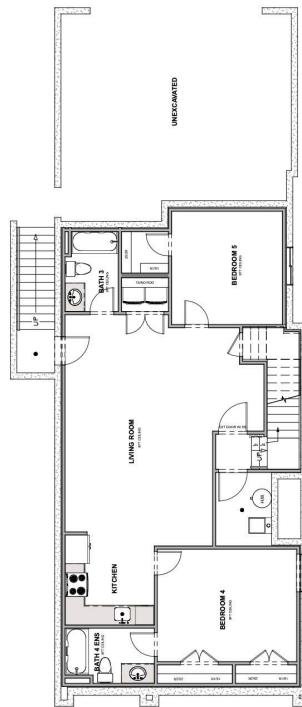
OPTIONAL FINISHED BASEMENT

Approx 1,258 Sq. Ft.



OPTIONAL FINISHED ADU BASEMENT

Approx 1,258 Sq. Ft.



Hillwood Homes Sales | 385.275.3133

HillwoodHomes.com